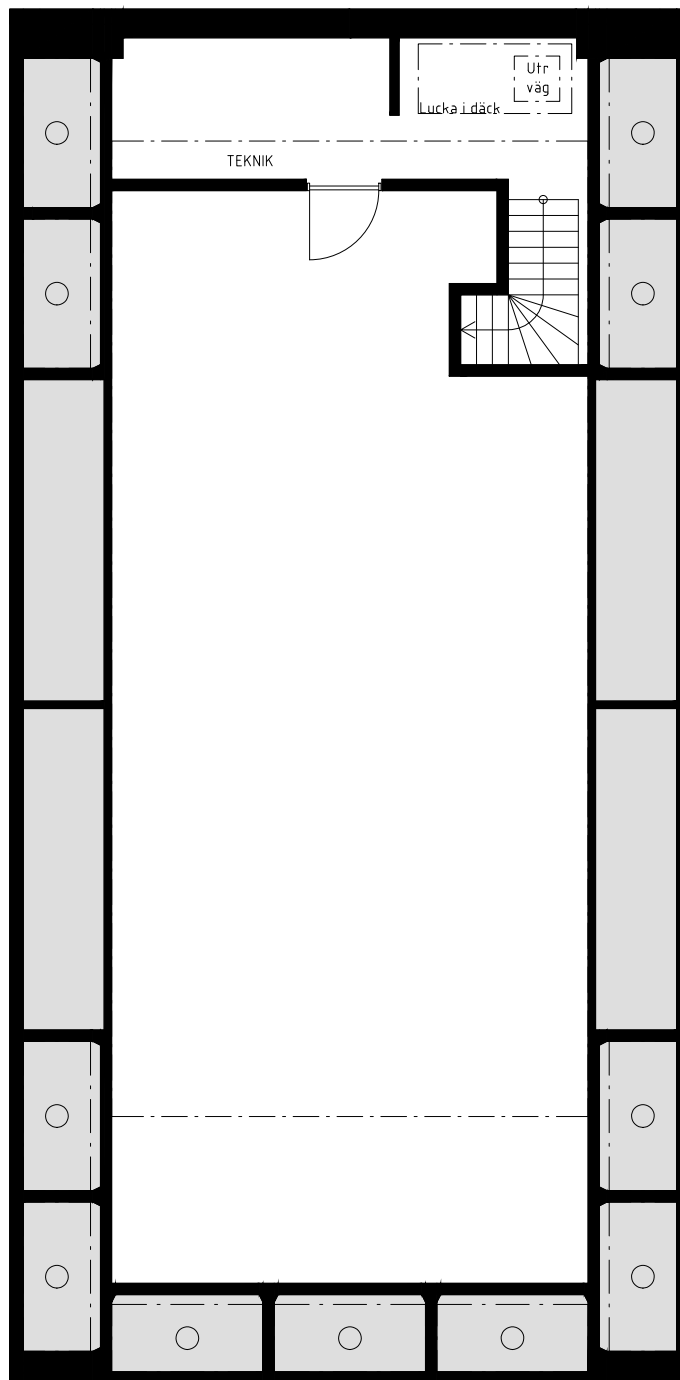
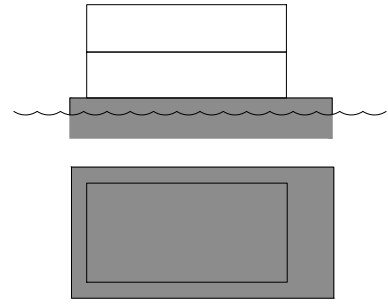


# AquaVilla modell AquaHome, 156m<sup>2</sup>

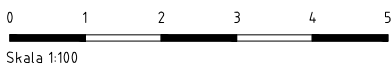
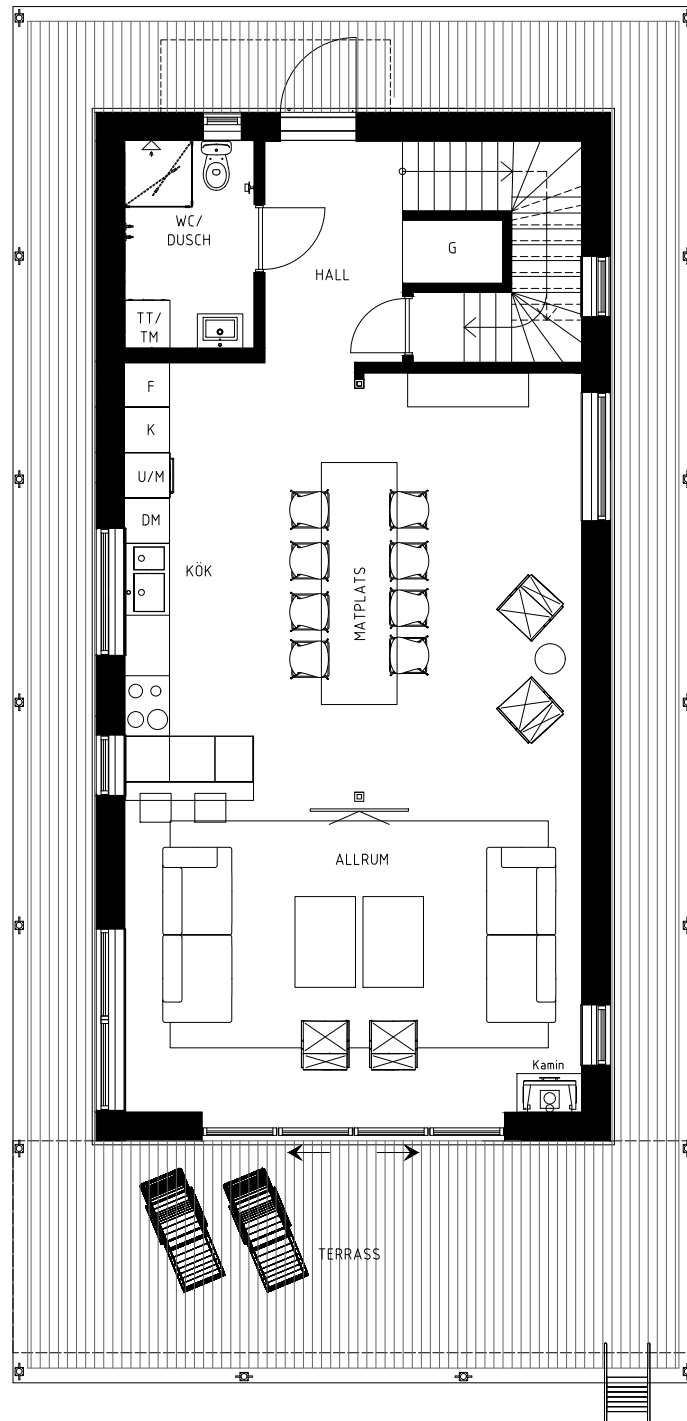
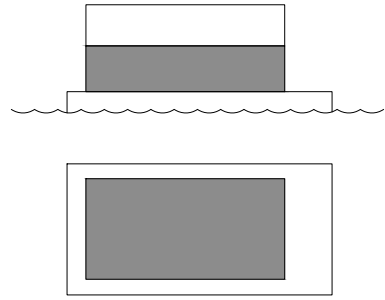
Plan 0, 104 kvm Biyta, inkl teknik, trapphus  
AquaComBi flytgrund/flytkropp



0 1 2 3 4 5  
Skala 1:100

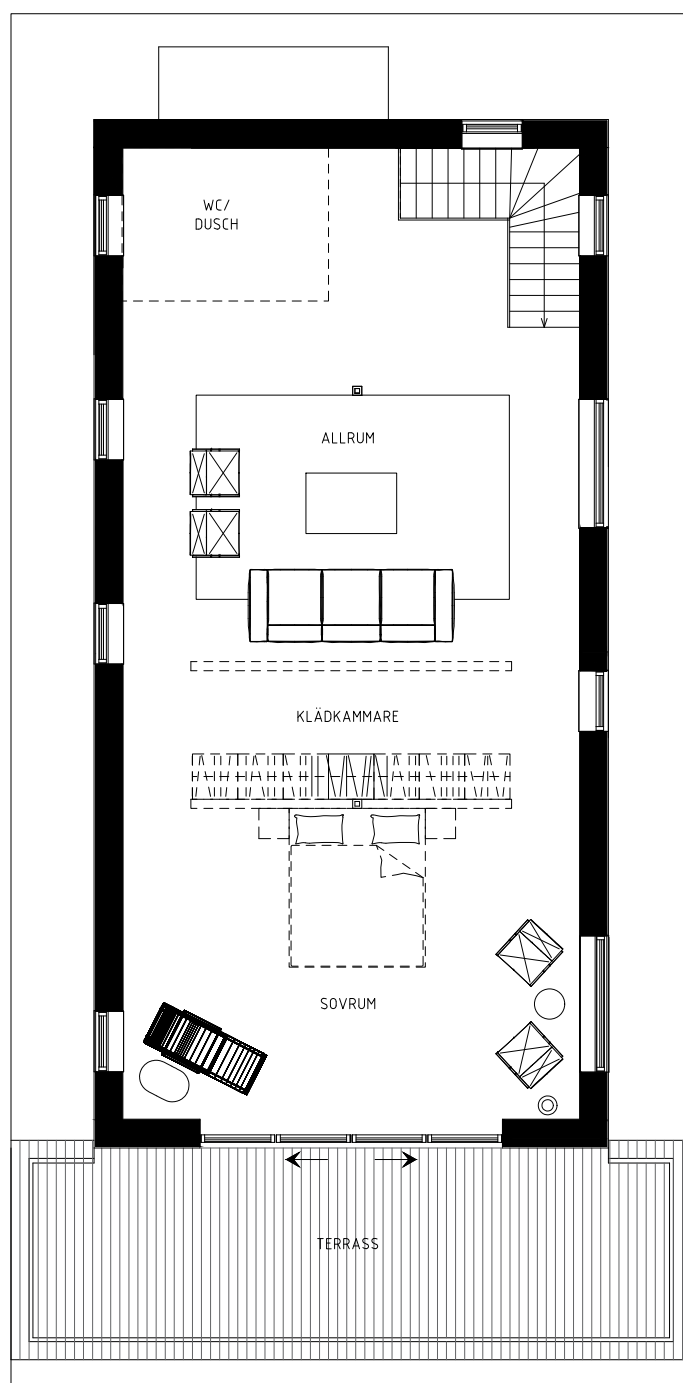
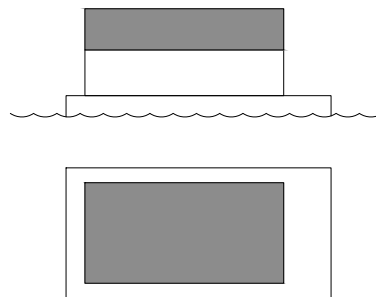
# AquaVilla modell AquaHome, 156m<sup>2</sup>

Plan 1, 78 kvm Boyta  
70 kvm Däckyta



# AquaVilla modell AquaHome, 156m<sup>2</sup>

Plan 2, 78 kvm Boyta  
25 kvm Terrass



0 1 2 3 4 5  
Skala 1:100